

/Le LEGhE



dESIGN
SUR-
FACES

Le LEGhE

Questo progetto è ispirato al magico gioco cromatico dei metalli e dalle loro infinite sfumature sottolineate e generate da sorprendenti effetti luminosi.

Cinque finiture cromatiche, accuratamente selezionate per potenziare la bellezza del materiale ceramico.

This project is inspired by the magical colour effects of metal and its infinite nuances enriched and illuminated by beautiful light effects. Five colour finishes, carefully selected to enhance the beauty of ceramic.

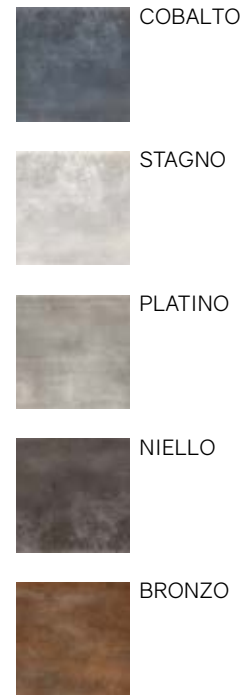
Ce projet s'inspire du merveilleux jeu chromatique des métaux et de leurs innombrables nuances sublimées et produites par de surprenants effets lumineux. Cinq finitions chromatiques, soigneusement sélectionnées pour intensifier la beauté du matériau céramique.

Dieses Projekt inspiriert sich an dem magischen Farbspiel der Metalle und ihrer unendlichen unterstrichenen Nuancen, die von überraschenden Leuchteffekten erzeugt werden. Fünf Farbangebote, die sorgfältig ausgewählt wurden, um die Schönheit der Keramik zu verstärken.

a/ floor e wall: BRONZO R - 61x122,2 cm/24"x48"



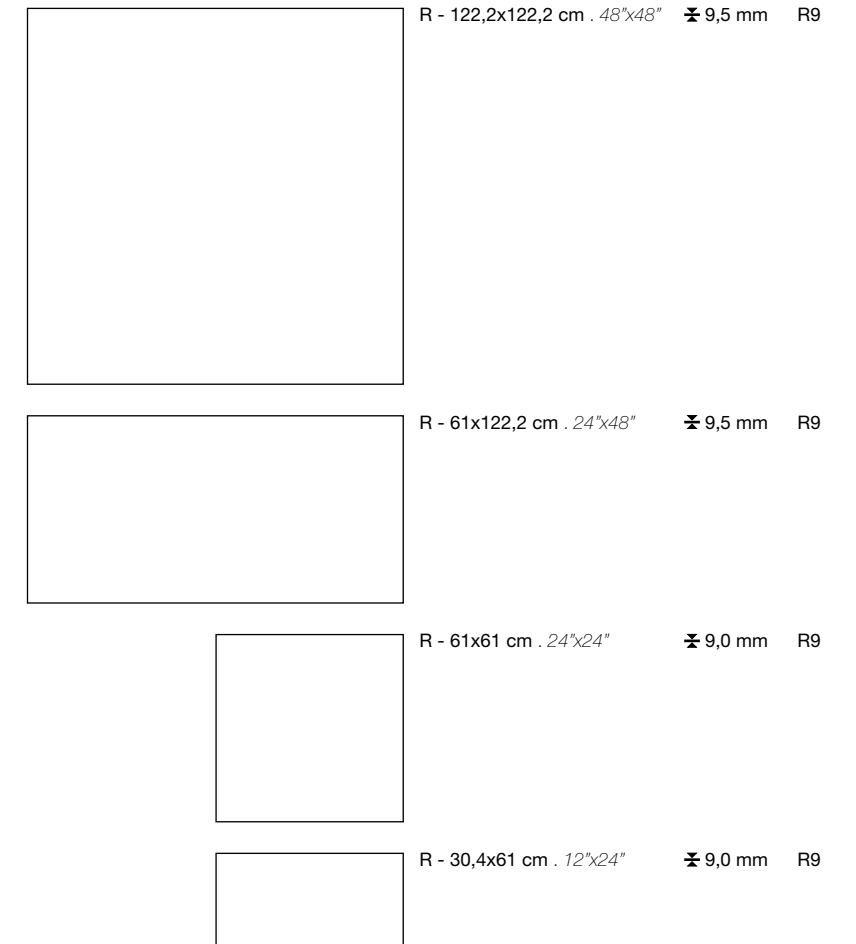
Colori / Colours / Couleurs / Farben



Le LEGhE 3

effetto metallo / metal-look / effet métallique / metalloptik

Formati / Sizes / Formats / Formate



R: Rettificato / Rectified

Formati / Sizes / Formats / Formate	R - 122,2x122,2 cm 48"x48" ±9,5 mm R9	R - 61x122,2 cm 24"x48" ±9,5 mm R9	R - 61x61 cm 24"x24" ±9,0 mm R9	R - 30,4x61 cm 12"x24" ±9,0 mm R9
STAGNO	●	●	●	●
PLATINO	●	●	●	●
NIELLO		●		
COBALTO		●		
BRONZO		●		

Le LEGhE

b/ floor: NIELLO R - 61x122,2 cm/24"x48"
wall: STAGNO R - 61x122,2 cm/24"x48"

c/ floor: STAGNO R - 122,2x122,2 cm/48"x48"
wall: UNIVERSAL NEBULA R - 61x122,2 cm/24"x48"



Le LEGhE



d

d/ PLATINO R - 61x61 cm/24"x24"

e/ wall: COBALTO R - 61x122,2 cm/24"x48"
floor: WHITE MARBLE STATUARIO LR - 121x121 cm /48"x48"



e



STAGNO



PLATINO



NIELLO

dESIGN
SUR-
FACES



COBALTO



BRONZO

STAGNO

- L8S0 122,2x122,2 cm 48"x48" - R A230
- J2S0 61x122,2 cm 24"x48" - R A180
- J1S5 61x61 cm 24"x24" - R A192
- J9S1 30,4x61 cm 12"x24" - R A110



PLATINO

- L7S9 122,2x122,2 cm 48"x48" - R A230
- J2S2 61x122,2 cm 24"x48" - R A180
- J1S7 61x61 cm 24"x24" - R A192
- J9S4 30,4x61 cm 12"x24" - R A110



NIELLO

- J2S3 61x122,2 cm 24"x48" - R A180



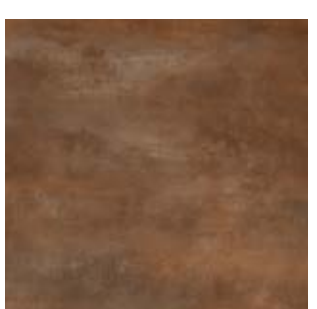
COBALTO

- J2S1 61x122,2 cm 24"x48" - R A180



BRONZO

- J2S4 61x122,2 cm 24"x48" - R A180



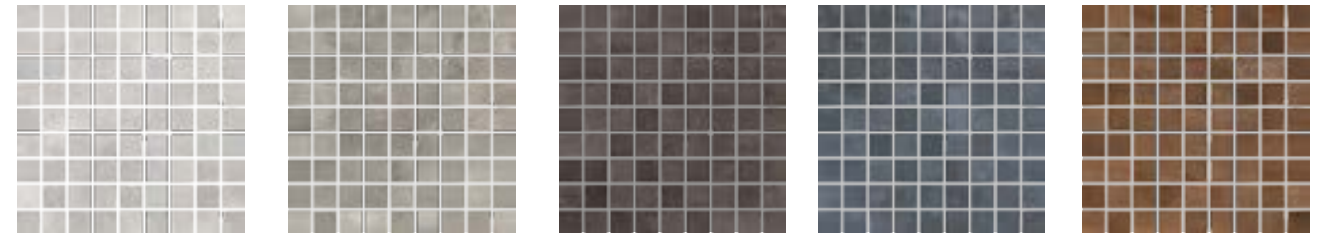


COBALTO

Le LEGhE

Decorsi / Decors / Décors / Dekors

mosaico monocolore 81 tessere 3x3 - 30x30 cm 12"x12" **P73**



STAGNO PLATINO NIELLO COBALTO BRONZO

mosaico asimmetrico 18 pz - 30x30 cm 12"x12" **P77**



STAGNO PLATINO NIELLO COBALTO BRONZO

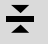

Pezzi Speciali / Special Pieces / Pièces Spéciales / Formteile						
	battiscopa 6,5x122,2 cm 2 ^{1/2} "x48" R P05	step 30,4x61 cm 12"x24" R P90	gradino costa retta 34x122,2x4 cm 13"x48"x1 ^{3/4} " R P32	gradino costa retta 34x61x4 cm 13"x24"x1 ^{3/4} " R P31	vista frontale angolare costa retta dx/sx 34x122,2x4 cm 13"x48"x1 ^{3/4} " R P41	vista dal retro angolare costa retta dx/sx 34x34x4 cm 13"x13"x1 ^{3/4} " R P40
STAGNO	•	•	•	•	•	•
PLATINO	•	•	•	•	•	•
NIELLO	•		•		•	
COBALTO	•		•		•	
BRONZO	•		•		•	

Note / Notes / Notes / Anmerkungen

I battiscopa e gli elementi "L" vengono venduti a pz. e a scatola completa. Tutti gli altri pezzi speciali vengono venduti al pezzo. I gradini vengono prodotti solo su ordinazione (tempo minimo di consegna 20 gg lavorativi).
 All skirting and monolithic L elements, priced per piece, are sold in full box. All other special trims are sold by piece. Steps are produced only on request (minimum delivery terms of 20 days).
 Les plinthes et élément "L" sont vendues la pièce et par boîte complète. Les autres pièces spéciales sont vendus la pièce. Le plat de marche sont produit sur demande (délai minimum de 20 jours).
 Die Sockelleisten und Stufen werden pro Stk. und Vollen Kartons verkauft. Stufen und Stufenecken werden nur auf Bestellung produziert (Lieferzeiten mindesten 20 arbeitstagen ab Auftragserteilung).

TABELLA PESI ED IMBALLI

Sizes weight and packaging / Mesures poids et emballages / Tabelle der Gewichte und Verpackungen


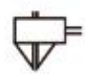










formati / sizes / tailles / formate /		pz. x box	mq. x box	box x pal.	mq. x pal.	kg. x mq	kg. x box	kg. x pal.	
RETTIFICATI / RECTIFIED (R)									
122,2x122,2 cm 48"x48" R	9,5 mm	2	2,99	18	53,82	21,09	63,05	1175	124x143x60
61x122,2 cm 24"x48" R	9,5 mm	2	1,49	36	53,64	20,52	30,57	1120	94x120x75
61x61 cm 24"x24" R	9 mm	4	1,49	30	44,70	19,80	29,50	900	80x120x75
30,4x61 cm 12"x24" R	9 mm	7	1,30	40	52,00	19,83	25,77	1045	80x120x75
pezzi speciali / special pieces / pièces spéciales / formteile /									
6,5x122,2 cm 2"x48" battiscopa rettificato		10					12,50		

Note / Notes / Notes / Anmerkungen /

I battiscopa e gli elementi "L" vengono venduti a pz. e a scatola completa. Tutti gli altri pezzi speciali vengono venduti al pezzo. I gradini vengono prodotti solo su ordinazione (tempo minimo di consegna 20 gg lavorativi).
 All skirting and monolithic L elements, priced per piece, are sold in full box. All other special trims are sold by piece. Steps are produced only on request (minimum delivery terms of 20 days).
 Les plinthes et élément "L" sont vendues la pièce et par boîte complète. Les autres pièces spéciales sont vendus la pièce. Le plat de marche sont produit sur demande (délai minimum de 20 jours).
 Die Sockelleisten und Stufen werden pro Stk. und Vollen Kartons verkauft. Stufen und Stufenecken werden nur auf Bestellung produziert (Lieferzeiten mindesten 20 arbeitstagen ab Auftragserteilung).

SIMBOLOGIA CARATTERISTICHE TECNICHE - GRÈS PORCELLANATO /

Symboles technical characteristics - porcelain stoneware / Symboles des caracteristiques techniques - grès cérame / Symbole technischen eigenschaften - feinsteinzeug

	CARATTERISTICHE TECNICHE TECHNICAL CHARACTERISTICS CARACTÉRISTIQUES TECHNIQUES TECHNISCHE MERKMALE	NORMA DI RIFERIMENTO REFERENCE STANDARD NORME DE REFERENCE PRÜFMETHODE	VALORE RICHIESTO REQUIRED VALUE VALEUR REQUISE SOLLWERT	VALORE MEDIO TUSCANIA AV. TUSCANIA VALUE VALEUR MOYENNE TUSCANIA MITTLERER TUSCANIA-WERT		
	DIMENSIONI DIMENSIONS DIMENSIONS ABMESSUNGEN	ISO 10545-2	CONFORME COMPLIANT CONFORME KONFORM	CONFORME COMPLIANT CONFORME KONFORM		
	ASSORBIMENTO D'ACQUA WATER ABSORPTION ABSORPTION D'EAU WASSERAUFNAHME	ISO 10545-3	≤ 0,5 %	CONFORME COMPLIANT CONFORME KONFORM		
	RESISTENZA A FLESSIONE MODULUS OF RUPTURE RESISTANCE A LA FLEXION BIEGEFESTIGKEIT	ISO 10545-4	MODULUS OF RUPTURE R ≥35 N/MM ² BREAKING STRENGTH S ≥1300 N	CONFORME COMPLIANT CONFORME KONFORM		
	RESISTENZA ALL'ABRASIONE ABRASION RESISTANCE RÉSISTANCE À L'ABRASION ABRIEBBESTÄNDIGKEIT	ISO 10545-7	PEI SOLO PER PIASTRELLE SMALTATE ONLY FOR GLAZED TILES			
	DILATAZIONE TERMICA LINEARE LINEAR THERMAL EXPANSION DILATATION THERMIQUE LINEAIRE LINEARE WÄRMEAUSSDEHNUNG	ISO 10545-8	≤ 9x10 ⁻⁵ °C ⁻¹	CONFORME COMPLIANT CONFORME KONFORM		
	RESISTENZA AGLI SBALZI TERMICI THERMAL SHOCK RESISTANCE RESISTANCE AUX ECARTS DE TEMPERATURE ITEMPERATURWECHSELBESTÄNDIGKEIT	ISO 10545-9	RESISTENTE RESISTANT RESISTANT BESTÄNDIG	RESISTENTE RESISTANT RESISTANT BESTÄNDIG		
	RESISTENZA AL GELO FROST RESISTANCE RESISTANCE AU GEL FROSTBESTÄNDIGKEIT	ISO 10545-12	RESISTENTE RESISTANT RESISTANT BESTÄNDIG	RESISTENTE RESISTANT RESISTANT BESTÄNDIG		
	RESISTENZA AGLI ACIDI ED ALLE BASI ACID AND ALKALI RESISTANCE RESISTANCE AUX ACIDES ET AUX BASES SÄURE- UND LAUGENBESTÄNDIGKEIT	ISO 10545-13	CLASS GB MIN.	LOW CONCENTRATION GLA HIGH CONCENTRATION GHA		
	RESISTENZA ALL'ATTACCO CHIMICO CHEMICAL RESISTANCE RESISTANCE À L'ATTAQUE CHEMIQUE CHEMISCHE BESTÄNDIGKEIT	ISO 10545-13	CLASS GB MIN.	GA		
	RESISTENZA ALLE MACCHIE STAIN RESISTANCE RESISTANCE AU TACHES FLECKENBESTÄNDIGKEIT	ISO 10545-14	CLASS 3 MIN.	5		
	COEFFICIENTE DI ATTRITO (SCIVOLOSITÀ) FRICTION COEFFICIENT (SLIPPERINESS) COEFFICIENT DE FRICTION (GLISSEMENT) REIBUNGSKOEFFIZIENT (RUTSCHIGKEIT)	BCR - ITALIA DM DEL 14-06-89	ASTM - USA ASTM C1028	DIN - GERMANIA DIN 51130		
		DRY RUBBER 0,62	WET RUBBER 0,51	DRY NEOLYTHE 0,69	WET NEOLYTHE 0,62	R9 ZH 1/571

THE PRODUCTS HAVING AN ABSORPTION < 0,5% ARE CLASSIFIED ACCORDING THE UNI CEN STANDARDS "FULLY VITRIFIED TILES" AND ACCORDING TO THE ASTM STANDARDS "IMPERVIOUS TILES"

Le LEGhE

Le informazioni contenute nel presente catalogo sono il più possibile esatte, ma non sono da ritenersi vincolanti. Per esigenze di produzione l'Azienda si riserva il diritto di apportare eventuali modifiche che si rendessero necessarie. Peso, colori e misure sono soggetti alle inevitabili variazioni tipiche del processo di cottura della ceramica. I colori e gli effetti riportati sul presente catalogo sono indicativi per i limiti consentiti dalla stampa; per questo non possono essere vincolanti e costituire base per eventuali contestazioni.

The information contained in this catalogue is as accurate as possible, but cannot be considered as legally binding. The Company reserves the right to make any modifications that become necessary due to production requirements. Weight, colours and dimensions are subject to the inevitable variations typical of the ceramic firing process. Colours and aesthetic effects shown on this catalogue should be considered indicative and approximate as a result of printing process limits. Possible variations may occur and can not be at the base of any claim.

Les informations reprises dans ce catalogue sont exactes, mais elles n'engagent aucunement notre Société du point de vue légal. Pour des exigences de production la Société se réserve le droit d'apporter toutes les dimensions sont assujettis aux variations typiques du processus de cuisson de la céramiques. Les couleurs et les effets présentés dans ce catalogue sont indicatifs dans la mesure permise par la presse, ce qui explique pourquoi ils ne peuvent pas être obligatoire et constituer la base d'un éventuel désaccord.

Die Informationen des vorliegenden Katalogs sind so exakt wie möglich, sind jedoch nicht als gesetzlich verbindlich zu betrachten. Aus Fertigungsgründen behält die Firma sich das Recht vor, eventuell notwendige Änderungen vorzunehmen. Veränderungen, die für den Brennvorgang von Keramikprodukten typisch sind. Die in diesem Katalog gezeigten Farben und Effekte sind Richtwerte, soweit durch die Presse, die ist, warum sie nicht bindend und stellen die Grundlage für eine Meinungsverschiedenheit gestattet.

Credit:

Marketing:
Tuscania

Progetto Grafico:
EUREKA


TUSCANIA[®]
ceramiche



/Le LEGhE



tuscaniagres.it

Tuscania S.p.A.

Via Giardini Sud, 4603
41028 Serramazzoni (Mo) - Italia
Tel. +39 0536.952399
Fax +39 0536.954716
info@tuscaniagres.it
www.tuscaniagres.it

